



**AVERAGE TIME**

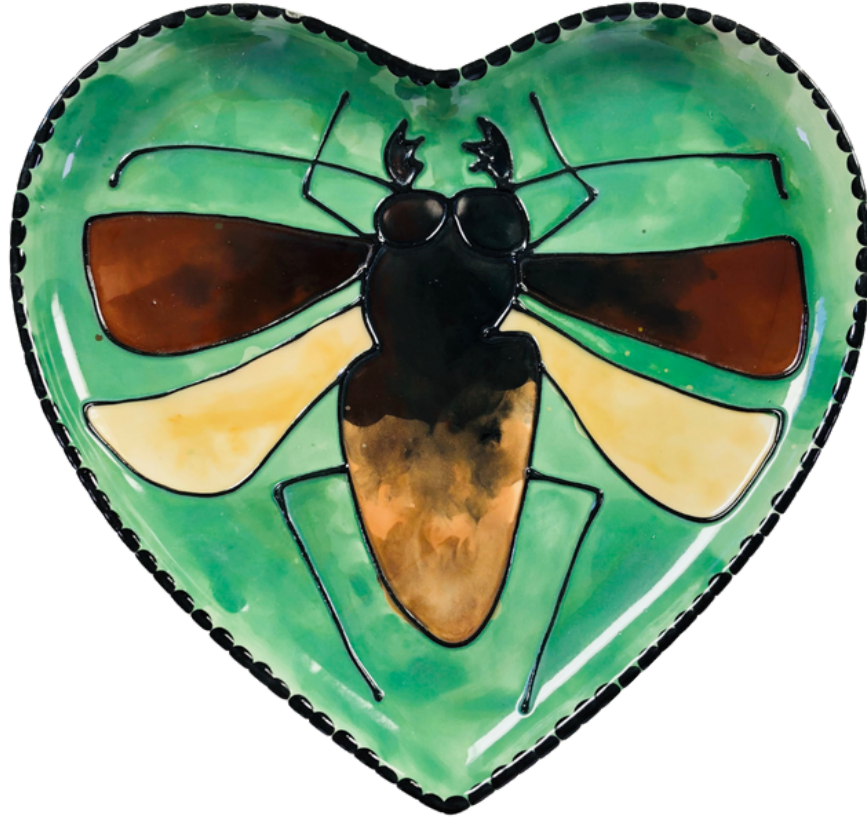
2  
HOURS

**CHALLENGE LEVEL**



Rainforest creatures are awesome.

# TITAN BEETLE PLATE



## MATERIALS

- DB30615 - Large Heart Plate
- #6 Round Brush
- #2 Round Brush
- #1 Short Liner Brush
- FD254 - Black Licorice
- Tissue Paper
- Water-Based Marker
- Pencil

## COLORS

- CMM72 - Sahara
- CMM73 - Honeycomb
- CMM13 - Cinnamon Stick
- CMM61 - Chocolate
- CMM48 - Guacamole
- CMM31 - Licorice
- CMM67 - Snow Flake

*Color Me Mine*

## INSTRUCTIONS

1. Wipe a damp sponge over the entire plate to remove dust and contaminants.
2. Trace the design from the pattern sheet onto the tissue paper with a pencil.
3. Place the tissue paper pattern on the pottery and trace over the lines with a water-based marker to transfer the lines.
4. Outline the design with Black Licorice French Dimensions. This will create a 'wall' for the watercolor technique.
5. Water the glaze down to a milky consistency.
6. Puddle color on the body of the beetle with the following color pattern from top to bottom: Licorice, Honeycomb, and Cinnamon Stick. While the color is still wet, drop in the next color and overlap a bit. For best results, work in small sections so the base color stays watery.
7. Puddle Licorice and Chocolate on the top wings.
8. Puddle Sahara and Honeycomb on the bottom wings.
9. Puddle Guacamole on the background.
10. Using the back of the pencil like a stamp, make Licorice dots around the edge of the plate as a border.

## TIPS

- Wash brush between colors.
- Use a contrasted colored marker to make the pattern more visible as you are painting.
- Use masking tape to hold the tissue paper while you are tracing if it shifts.
- When using the watercolor technique, make sure to use lots of water to keep the runny and milky consistency of the color to help it flow.
- Use a round brush to apply the watercolor technique to avoid brushstrokes.
- For an easier customer experience, do Steps 1-4 beforehand.
- French Dimensions Tips:
  - Keep a slow and steady pace, and stay just above the pottery.
  - Practice on a piece of paper before working on the plate for more confidence.
  - Remember to shake the bottle towards the tip and away from your plate to push out air bubbles.

*Color Me Mine*<sup>®</sup>

